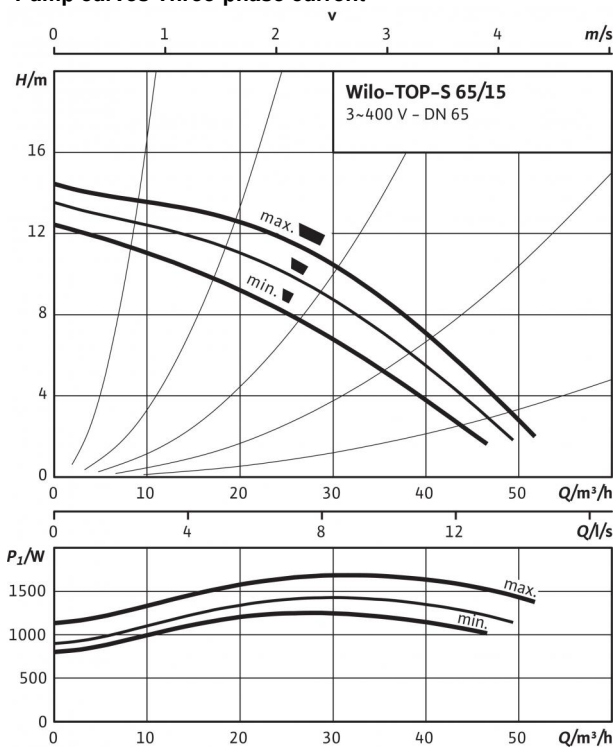
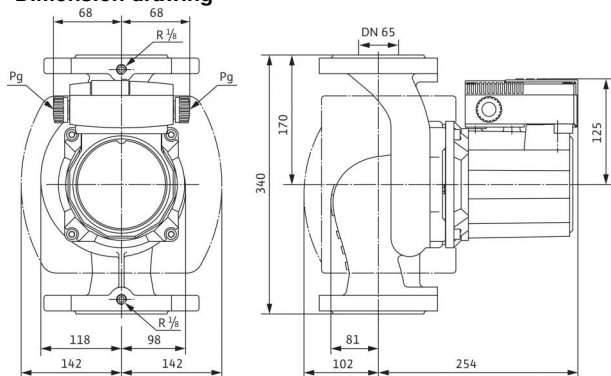


Data sheet: Wilo-TOP-S 65/15 DM PN6/10 (3~400/230 V, PN 6/10)

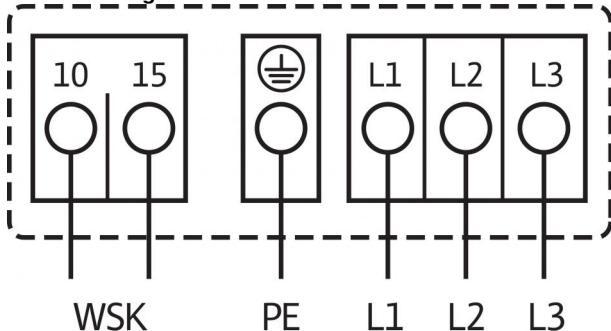
Pump curves Three-phase current



Dimension drawing



Terminal diagram



Mains connection, 3~400 V, 50 Hz
 3~230 V, 50 Hz (optional with switching plug 3~230 V)
 WSK = thermal winding contact
 Full motor protection at all speed stages with optional tripping unit
 SK 602N/SK 622N or other switchgear/control devices with WSK
 connection option
 Triggering: External tripping at switchgear/control device
 Reset: Automatic fault acknowledgement after cooling off of the motor
 Automatic

Approved fluids (other fluids on request)

Heating water (in accordance with VDI 2035)
 Water-glycol mixtures (max. 1:1; above 20% admixture, the pumping data must be checked)

Permitted field of application

Temperature range at max. ambient temperature
 +40 °C

Maximum permissible operating pressure P_{max}

Pipe connections

Flange
 Nominal flange diameter
 Overall length l_0

Motor/electronics

Emitted interference EN 61000-6-3
 Interference resistance EN 61000-6-2
 Protection class IP X4D
 Insulation class H
 Mains connection 3~400/230 V, 50 Hz
 Nominal motor power P_2 1300 W
 Speed n 2500 / 2700 / 2850 rpm
 Power consumption P_1 1240 / 1425 / 1685 W
 Current at 3~400V / 2.18 / 2.52 / 3.41 A
 Current at 3~230V / 3.78 / 4.36 / 5.91 A
 Threaded cable connection PG 2x13.5
 Motor protection Optional SK 602N/622N tripping unit

Materials

Pump housing Grey cast iron (EN-GJL-250)
 Impeller Plastic (PP - 50% GF)
 Pump shaft Stainless steel (X46Cr13)
 Bearing Total carbon

Minimum suction head at suction port for avoiding cavitation at water pumping

Temperature
 Minimum suction head at 50 / 95 / 110 / 130 °C 3 / 10 / 16 / 29 m

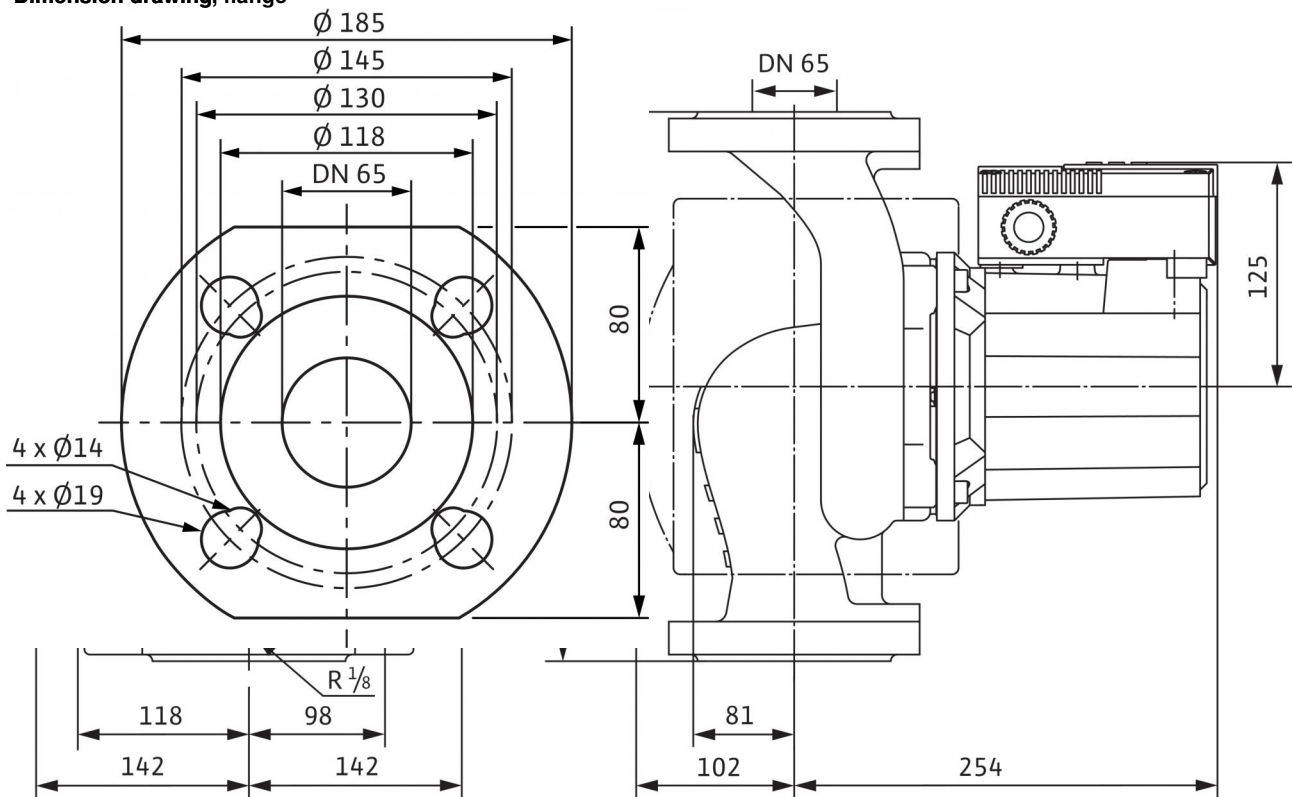
Information for order placements

Make Wilo
 Type TOP-S 65/15 DM PN6/10
 Art no. 2165539
 Weight approx. m 30.4 kg

• = available, - = not available

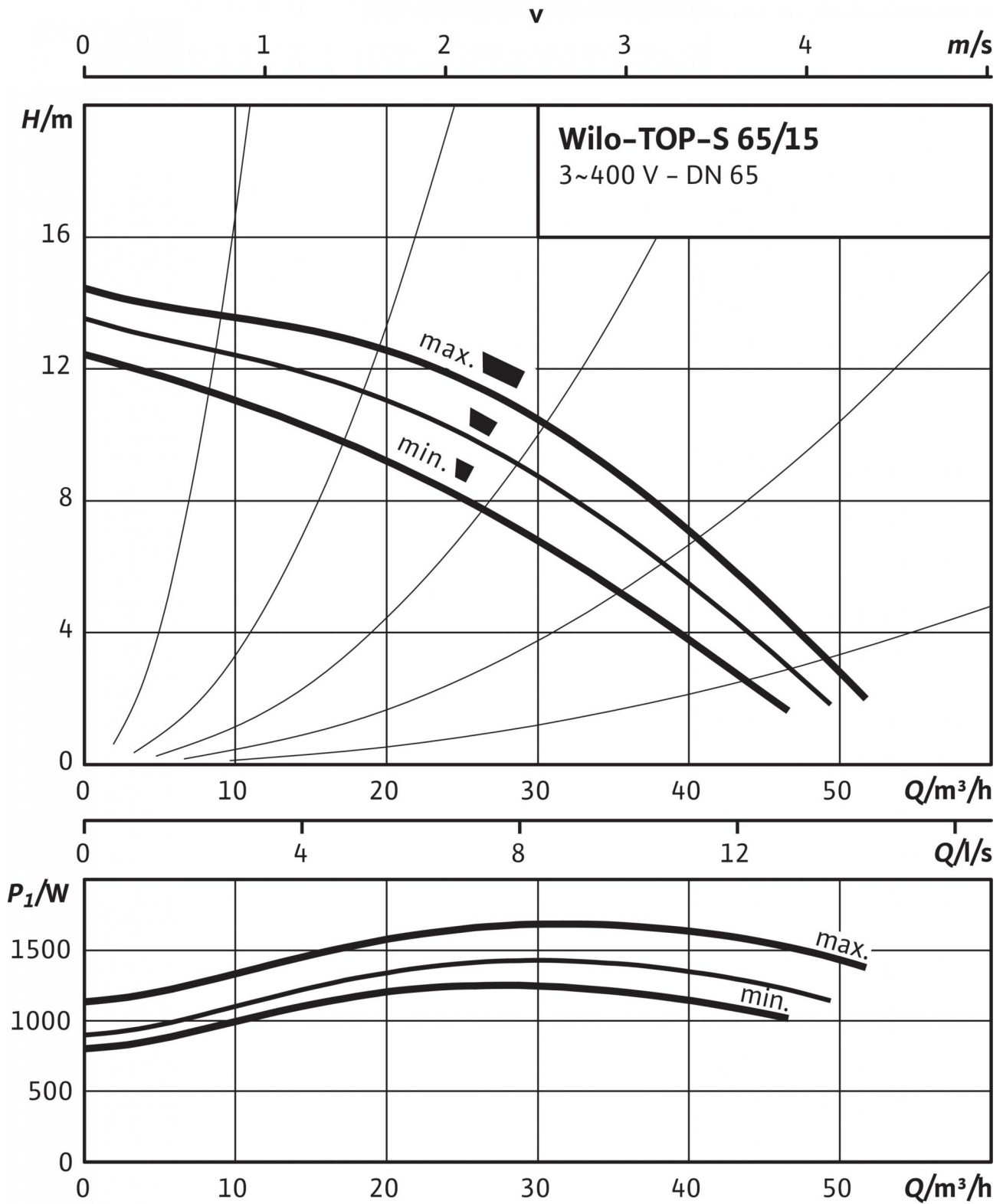
Dimensions and dimensions drawings: Wilo-TOP-S 65/15 DM PN6/10 (3~400/230 V, PN 6/10)

Dimension drawing, flange



Pump curves: Wilo-TOP-S 65/15 DM PN6/10 (3~400/230 V, PN 6/10)

Pump curves Three-phase current



Ordering information: Wilo-TOP-S 65/15 DM PN6/10 (3~400/230 V, PN 6/10)

Make	Wilo
Type	TOP-S 65/15 DM PN6/10
Art no.	2165539
EAN number	4048482638270
Colour	green/black
Minimum order quantity	1
Minimum order quantity unit	PCE
Weight (net) <i>kg</i>	30.4
Length (net) <i>mm</i>	340
Width (net) <i>mm</i>	284
Height (net) <i>mm</i>	356
Weight (gross) <i>kg</i>	31
Length (gross) <i>mm</i>	470
Width (gross) <i>mm</i>	320
Height (gross) <i>mm</i>	385
Packaging type	Cardboard box
Packaging property	Transport packaging
Pieces per pallet	12
Number per layer	4

Tender text: Wilo-TOP-S 65/15 DM PN6/10 (3~400/230 V, PN 6/10)

Can be used for hot-water heating systems of all kinds, industrial circulation systems, air-conditioning systems and closed cooling circuits.

Maintenance-free glandless circulation pump with threaded or flange connection, pre-selectable speed stages for power adjustment.

Equipment and function

- Manual power adjustment with 3 speed stages
- Pumps with 1~ motor:
 - P2 up to 90 W: internal protection against unacceptably high winding temperatures
 - P2 ≥ 180 W: Full motor protection with thermal winding contacts in conjunction with tripping unit (optional: SK 602N/SK 622N)
- Pumps with 3~ motor:
 - P2 up to 90 W: internal protection against unacceptably high winding temperatures
 - P2 ≥ 180 W: Full motor protection with thermal winding contacts in conjunction with tripping unit (optional: SK 602N/SK 622N)
 - Mains connection 3~, 230 V with optional switching plug
- Cataphoretic-coated pump housing for optimal corrosion protection
- PN 6/PN 10 combination flange (for DN 40 to DN 65)
- Thermal insulation shell for heating applications

Materials

Pump housing: Grey cast iron (EN-GJL-250)

Impeller: Plastic (PP - 50% GF)

Pump shaft: Stainless steel (X46Cr13)

Bearing: Total carbon

Approved fluids (other fluids on request)

Max. volume flow Q_{max} : 52 m³/h

Max. delivery head H_{max} : 14.99999 m

Permitted field of application

Temperature range at max. ambient temperature +40 °C: -20 up to +130 (in short-term operation 2 h: +140) (for applications with Wilo-Protect-Module C: -20 to +110) °C

Pipe connections

Nominal flange diameter: DN 65

Flange: Combination flange PN6/10 (PN 16 flange according to EN 1092-2)

Overall length l_0 : 340 mm

Motor/electronics

Emitted interference: EN 61000-6-3

Interference resistance: EN 61000-6-2

Protection class: IP X4D

Insulation class: H

Mains connection: 3~400/230 V, 50 Hz

Mains frequency f : 50 Hz

Nominal motor power P_2 : 1300 W

Speed n : 2500 / 2700 / 2850 rpm

Current at 3~400V I : 2.18 / 2.52 / 3.41 A

Motor protection: Optional SK 602N/622N tripping unit

Threaded cable connection PG : 2x13.5

Information for order placements

Art no.: 2165539

EAN number: 4048482638270

Weight approx. m : 30.4 kg

Make: Wilo

Type: TOP-S 65/15 DM PN6/10